

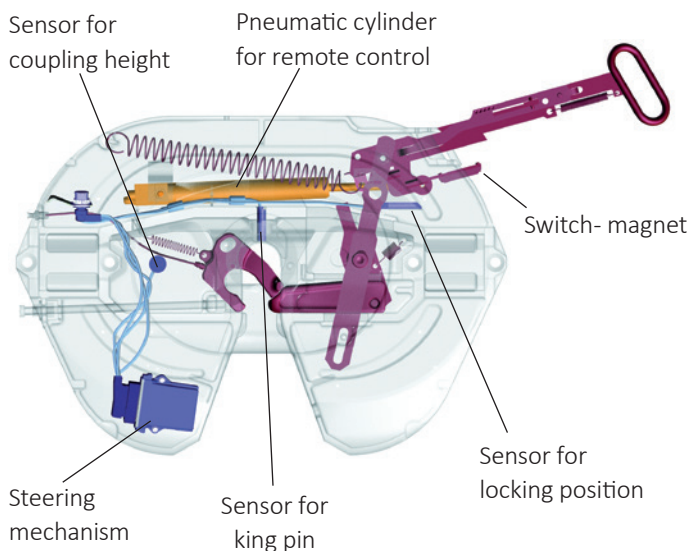
SKS (Sensor coupling system)

Advantages at a glance

- Sensors provide optimum safety when connecting
- Increased safety even in poor visibility
- The pneumatic mechanism of the lock enables the fifth wheel coupling to be opened effortlessly at all times, even when the tractor/trailer unit is under tension
- Avoids unnecessary shunting and fiddling
- The fifth wheel coupling can still be operated mechanically

Technical Features

- The remote control in the cabin opens the fifth wheel coupling at the push of a button thanks to a pneumatic cylinder.
- A sensor permanently monitors the locking position and displays it in the driver's cabin
- A second sensor controls the position of the king pin
- A third sensor displays the correct coupling height in the driver's cab
- Sensors are located in protected zones on non-moving parts
- Electromagnetical compatibility according to highest standards



Selection table / Versions available

Plate mounting

| Order No. | H (mm) | Weight (kg) | Approval (ECE) | WA |
|--------------------|--------|-------------|----------------|----|
| JSK 42 K0 20 49 AA | 150 | 133 | E1 55R-01 1245 | Z |
| JSK 42 K0 20 51 AA | 150 | 132 | E1 55R-01 1245 | W |
| JSK 42 K0 38 49 AA | 185 | 131 | E1 55R-01 1245 | Z |
| JSK 42 K0 38 51 AA | 185 | 130 | E1 55R-01 1245 | W |
| JSK 42 K0 57 49 AA | 225 | 136 | E1 55R-01 1245 | Z |
| JSK 42 K0 57 51 AA | 225 | 135 | E1 55R-01 1245 | W |
| JSK 42 K0 70 49 AA | 250 | 140 | E1 55R-01 1245 | Z |
| JSK 42 K0 70 51 AA | 250 | 139 | E1 55R-01 1245 | W |

Technical Specification

Sensor coupling system in accordance with the ECE R55-01, TÜ.EGG.095-05, DIN 74081, ISO 3842, ECE R10 directives/standards. Suited for picking up 2" king pins (class G50) in accordance with ECE R55-01, DIN 74080, ISO 337 and steering wedges in accordance with ECE R55-01, DIN 74085.

Truck kit (remote control unit and cable set)*

| Order No. | Weight (kg) |
|--------------|-------------|
| SKE003790100 | 2.4 |

Also available for additional models in the **JSK 42** series

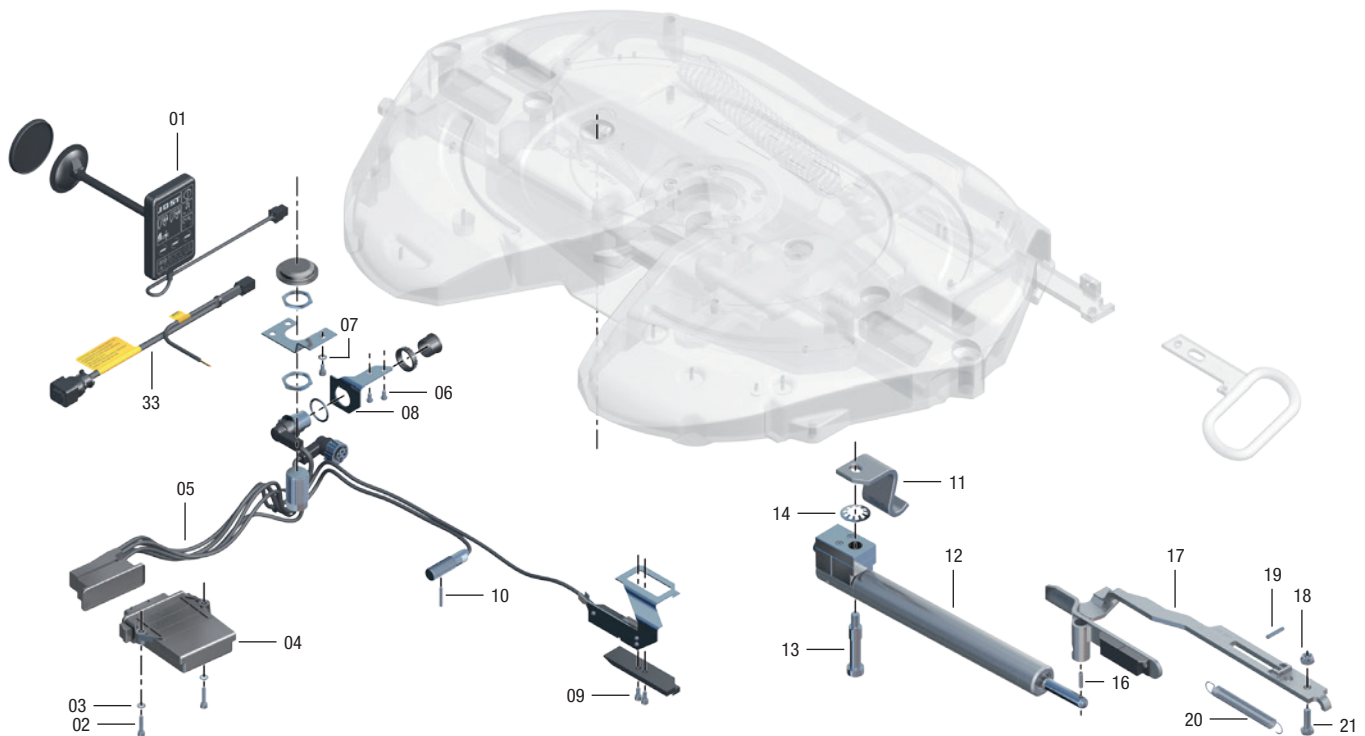
Before installing SKS, please make sure that electric and air connections are available.

*Truck kit must be ordered separately



Fifth wheel couplings SKS

Spare parts



Repair kits

| Item | Description | Order No. |
|------------------------|---|--------------|
| 01 | SKS display with activation via parking break | SKE003300300 |
| 33 | Kit trunk cable with relay | SKE003310200 |
| oZ | Relay | SKE003800100 |
| 05, 06, 07, 08, 09, 10 | Kit trunk cable SK | SKE003190100 |
| 17, 18, 19, 20, 21 | Kit locking lever + magnet | SKE001360100 |
| 12, 13, 14, 16, 18, 21 | Kit opening cylinder | SKE003230100 |

| Item | Description | Order No. |
|------------|--|--------------|
| 02, 03, 04 | SKS control device with activation via parking break | SKE003180300 |
| 11, 13 | Pitching angle end stop | SKE003240000 |
| oZ | Pitching angle end stop 55 mm for BH150 | SKE003250200 |
| oZ | Pitching angle end stop 32 mm | SKE003250100 |

For spare parts for the fifth wheel coupling, see JSK 42